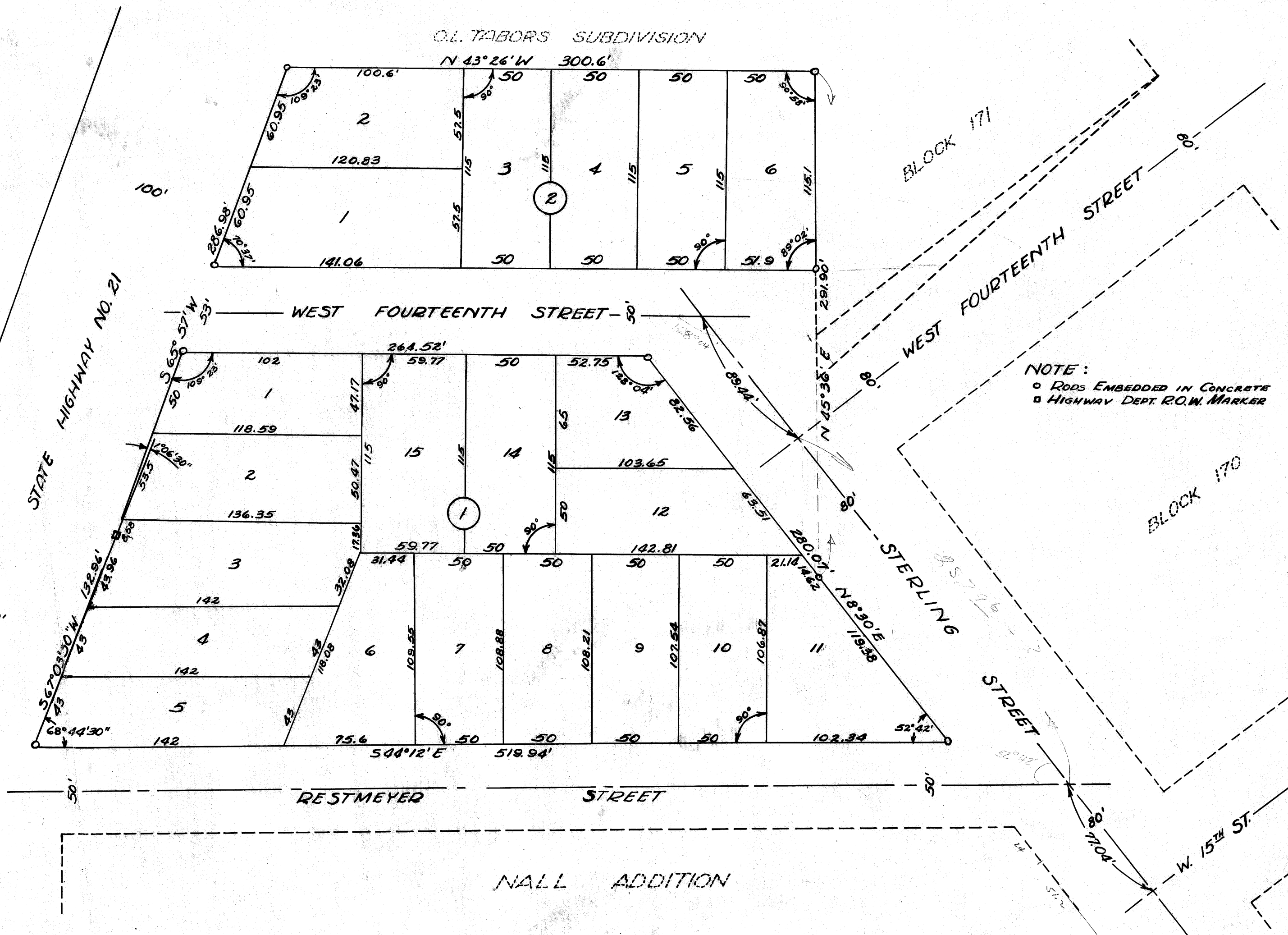


on base of 42103

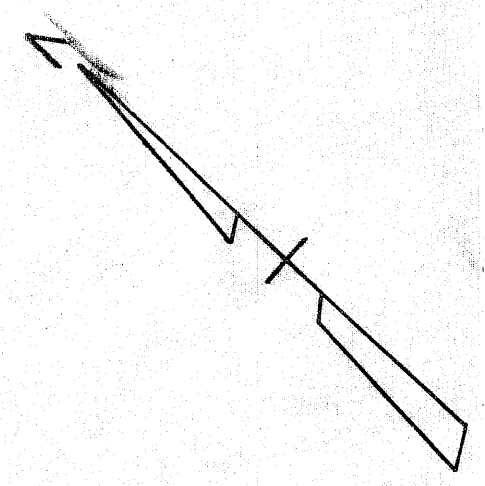


RESTMEYER ADDITION

A subdivision of Lot No. 3 of Bryan's 2nd addition to the City of Bryan, Texas and the North part of the fractional Block No. 188 of the City of Bryan

D.R. 144 19,563-566 6-20-50
Scale: 1"=50'

NOTE:
○ RODS EMBEDDED IN CONCRETE
□ HIGHWAY DEPT. R.O.W. MARKER



302